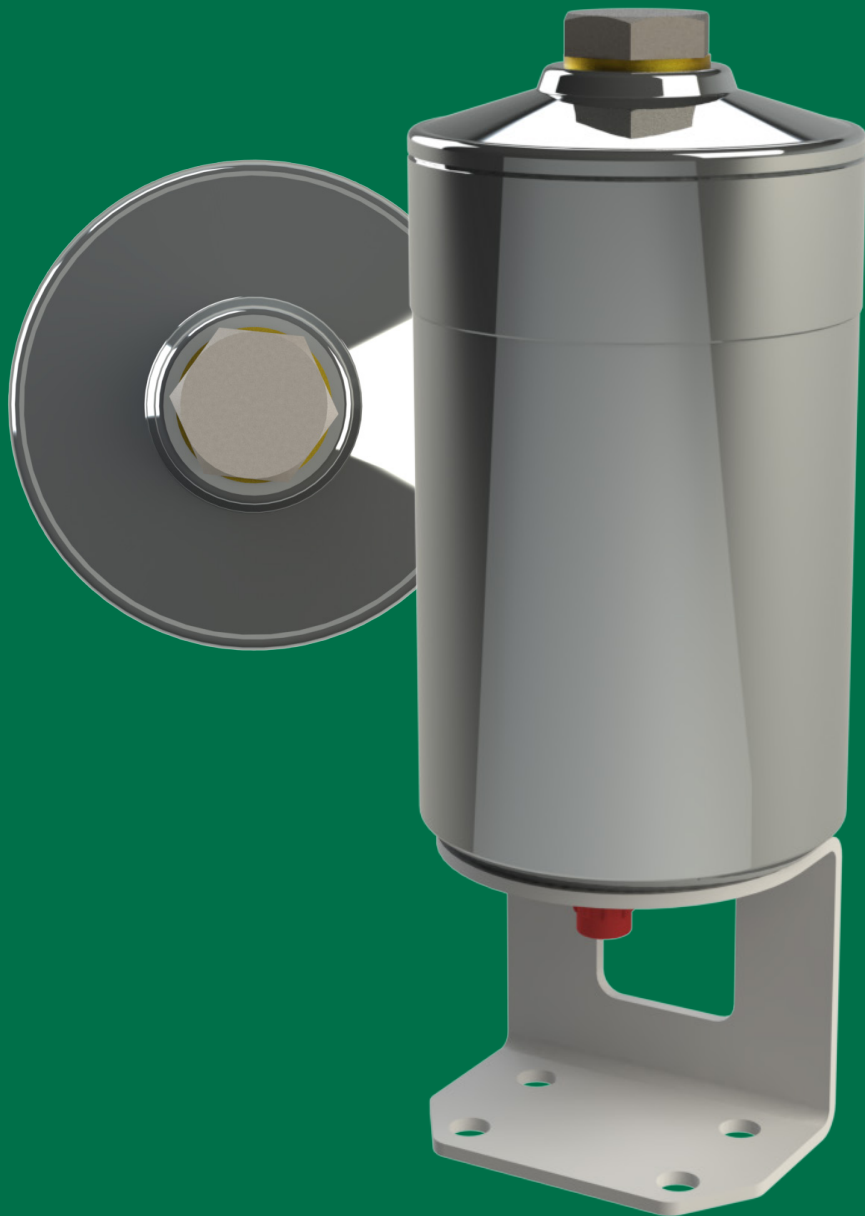


# CFU-10

## BYPASS OIL FILTER



### APPLICATION EXAMPLES

SMALL CAPACITY / RESTRICTED SPACES INSTALLATIONS SUCH AS:

- EARTH MOVING MACHINES
- FORESTRY EQUIPMENT
- MOBILE CRANES
- DRILLING/PILING EQUIPMENT
- STATIC HYDRAULIC SYSTEMS



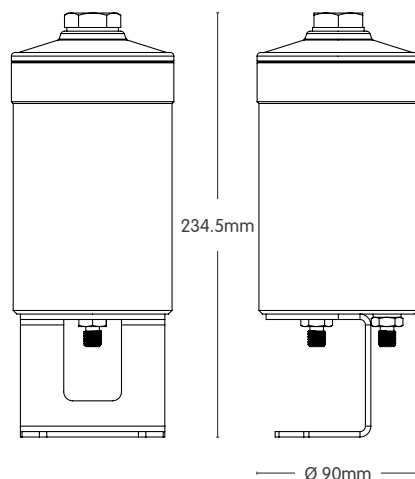
## FEATURES

- Input pressure 2-10 Bar
- Up to 99.9% water removed (both free and dissolved water)
- Particle contamination removed

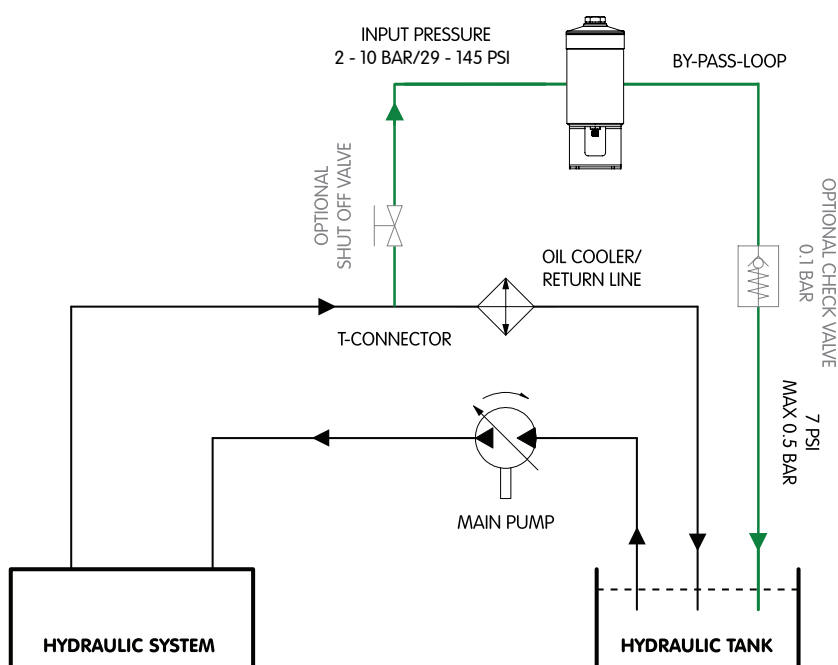
## BENEFITS

- Removes varnish and microparticles (down to less than 1 micron)
- Removes free and dissolved water contamination
- Increases system reliability
- Prevents system corrosion
- Reduces component wear
- Extends oil life and generates CO<sub>2</sub> saving
- Reduces operating costs

## DIMENSIONS



## INSTALLATION EXAMPLE



Recommended Installation	Flow Rate Through Filter (l/m)	Dimensions (mm)		Connections		Weight (kg)	Filter Element Type	Retention Capacity (per set)	
		H	D	Inlet	Outlet				
BY-PASS ONLY. Max input pressure 2-10 Bar and 0.5 Bar back pressure. Systems up to 100 litres.	25 (Max)	234.5	Ø 90	1/8" BSP (m)	1/8" BSP (m)	1.5	CFFC	≤ 0.4 kg Dirt	≤ 0.15 Litres of water

ETL Fluid Experts Ltd  
Grimbald Crag Road, Knaresborough  
North Yorkshire, HG5 8PY

T +44 (0)1423 522911  
E sales@etlfe.com

[www.etlfluidexperts.com](http://www.etlfluidexperts.com)

**ETL Fluid Experts**<sup>®</sup>

