

CARDEV® 

PRODUCT DATASHEET

SDU-M8

BY-PASS FILTER FOR ENGINE OILS



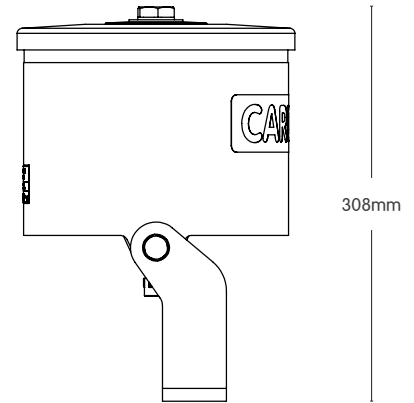
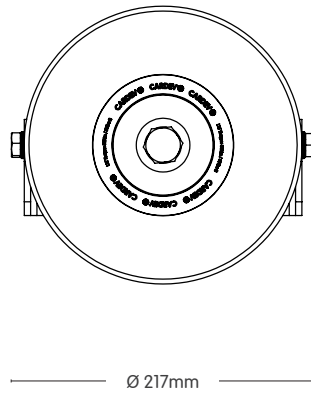
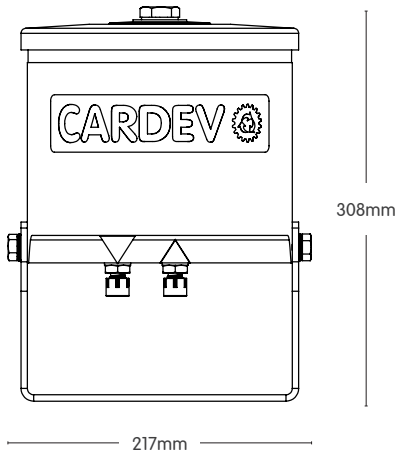
APPLICATION EXAMPLES

DIESEL ENGINES IN APPLICATIONS SUCH AS:

- EARTH MOVING MACHINES
- FORESTRY EQUIPMENT
- RAIL MAINTENANCE MACHINES
- DRILLING/PILING EQUIPMENT
- MARINE
- GENSETS
- TRUCK AND BUS FLEETS



DIMENSIONS



FEATURES

- Up to 99.9% water removed (both free and dissolved water)
- Particle contamination (including combustion deposits) removed
- Oil life can be extended by up to 4 times

BENEFITS

- Removes microparticles including combustion deposits
- Removes free and dissolved water contamination
- Increases system reliability
- Prevents engine corrosion
- Reduces component wear
- Extends oil life and generates CO2 saving
- Reduces operating costs

CASE STUDY

CARDEV RESULTS:

Data taken from a Deutz 2015 EGR engine fitted with a CARDEV SDU-M8 by-pass filter and filled with fully synthetic engine oil:

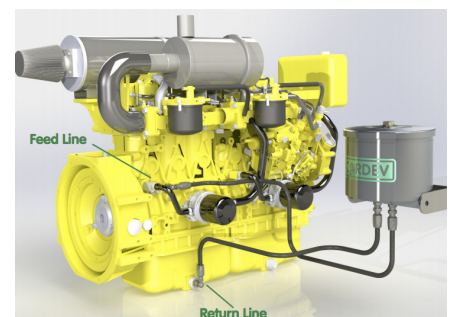
DATA COLLECTION PERIOD:
12 months / 2000hrs.

Using CARDEV by-pass filtration to control soot contamination extended the service life of the oil by 4 times, when compared to normal engine filtration.

Oil consumption was reduced by 75%, generating a CO₂ saving of over 75% when compared to engines without CARDEV filtration.

Recommended Installation	Flow Rate (l/h)	Dimensions (mm)		Weight (kg)	Filter Element Type	Retention Capacity (per set)	
		H	D			≤ 2.5 kg Dirt	≤ 0.78 Litres of water
BY-PASS ONLY. Max input pressure 2-6 Bar and 0.5 bar back pressure. Systems up to 40 Litres.	120 - 240 (Max)	308	Ø 217	8	Standard fit: 1 x SDFC		

INSTALLATION EXAMPLE



ETL Fluid Experts Ltd
Grimbald Crag Road, Knaresborough
North Yorkshire, HG5 8PY

T +44 (0)1423 522911
E sales@etlfe.com

www.etlfluidexperts.com

ETL FluidExperts®

