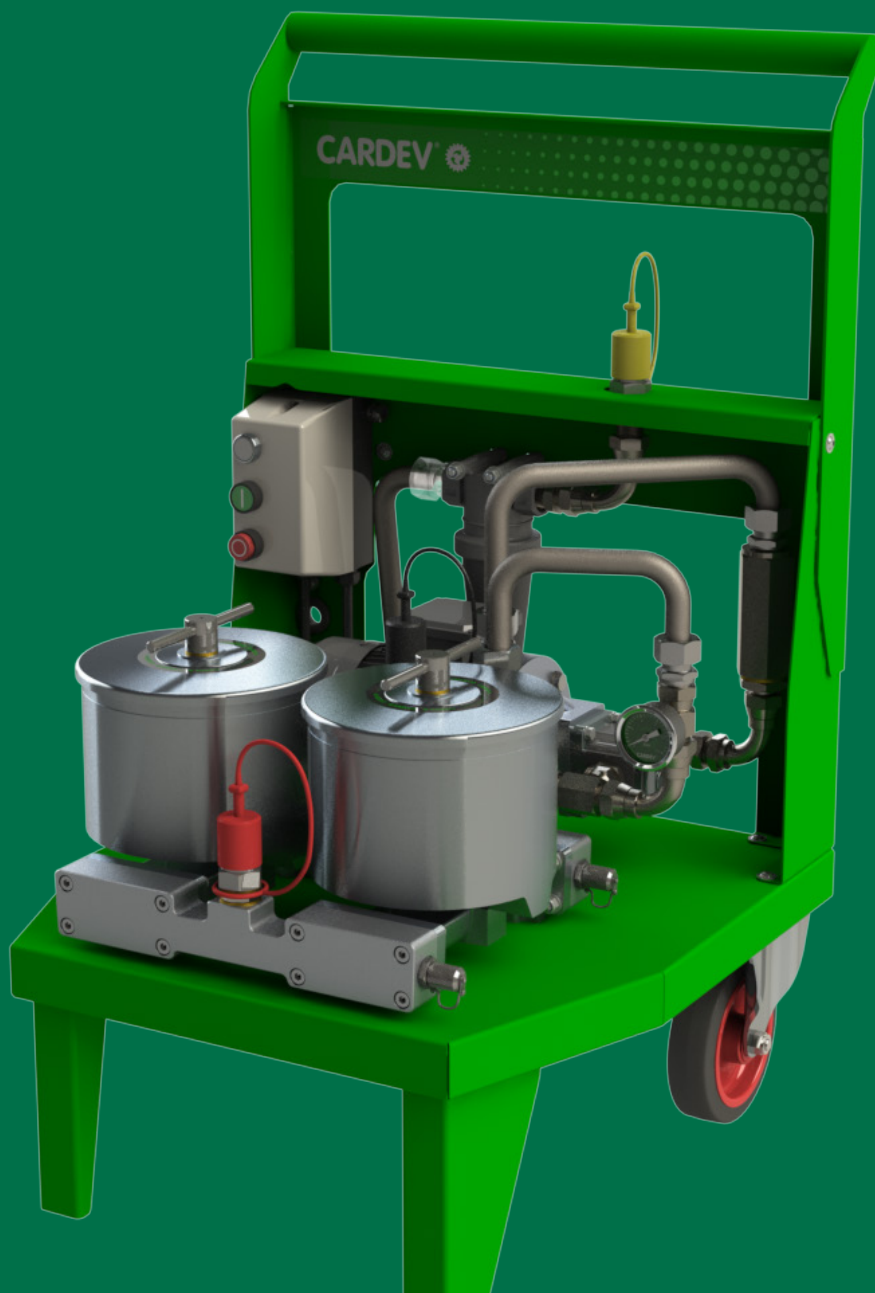


**CARDEV** 

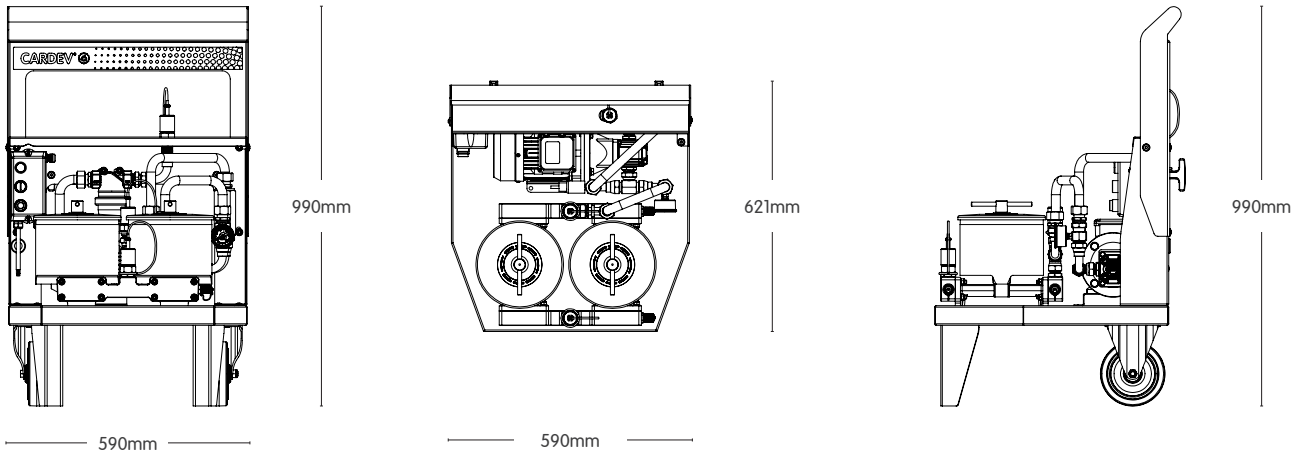
PRODUCT DATASHEET

# 2S

## MOBILE OFFLINE FILTER SYSTEM



## DIMENSIONS



## FEATURES

- Automatic low pressure cut-off
- Integrated sample points

## BENEFITS

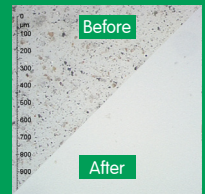
- Removes microparticles
- Removes free and dissolved water contamination
- Increases system reliability
- Prevents system corrosion
- Reduces component wear
- Extends oil life and generates CO<sub>2</sub> saving
- Reduces operating costs

## RESULTS

### Particles Removed

Oil cleanliness maintained at better than new levels

(Down to 13/11/8 (ISO 4406: 1999) - Class 2 (NAS 1638))



### Water Removed

Removes free and dissolved water down to < 50 ppm (0.005%)



Max Op Temp	IP Rating	Flow Rate (l/h)	Pump Suction Lift	Voltage	Current Draw	Power	Dimensions (mm)		Weight (kg)	Filter Element Type	Retention Capacity (per set)	
							H	W			≤ 5 kg Dirt	≤ 1.56 Litres of water
60°C	IP55	220	Self-priming to 5.5 metres	230V	5 Amps	0.55kW	990	590	60	Standard fit: 2 x SDFC	≤ 5 kg Dirt	≤ 1.56 Litres of water
							L					
							621					

Note: Flow rates, oil cleanliness levels and moisture removal results are based on ISO VG 46 Mineral Oil @ 40°C

ETL Fluid Experts Ltd  
Grimbald Crag Road, Knaresborough  
North Yorkshire, HG5 8PY

T +44 (0)1423 522911  
E sales@etlfe.com

[www.etlfluidexperts.com](http://www.etlfluidexperts.com)

ETL FluidExperts®

